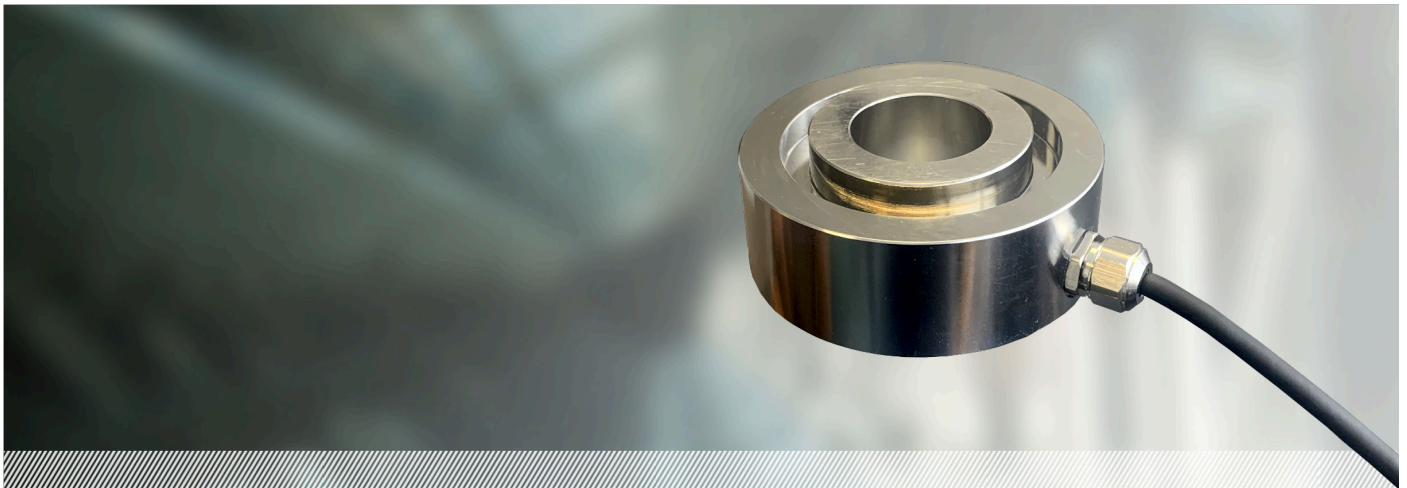


MODEL CDR SPECIFICATION

Single Ring Sensor designed for use between the rope anchor and hitch plate



Metrology and Electrical Specifications

Rated Load	1000, 3000	Kg
Rated Output	1.5+/- 10%, 20%	mV/V
Zero Balance	+/- 2%, 5%	mV/V
Non Linearity & Hysteresis	0.2%, 0.5%	rated load
Nominal input voltage	5~12	Volts
Maximum input voltage	15	Volts
Input resistance	780 +/- 20	ohms
Output resistance	700 +/- 20	ohms

Product Description

Individual Alloy Steel sensor for use between the rope anchorages and hitch plate.

General Specifications

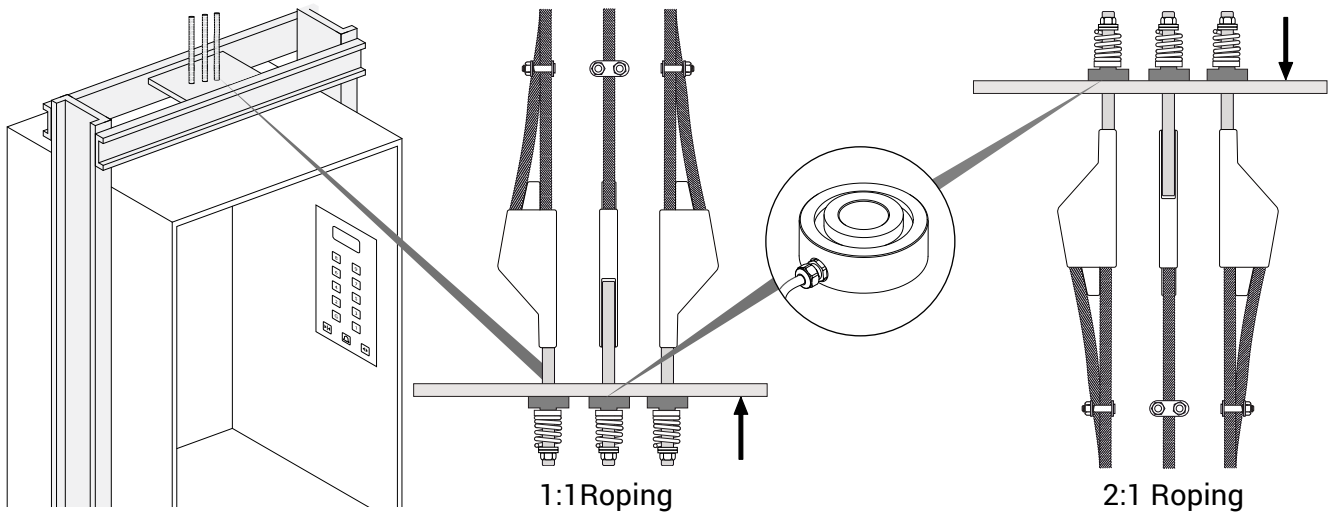
Overload	150	% rated load
Ultimate load	200	% rated load
Temperature range	-10 ~ 40	°C
Protection	IP66	
Material	Alloy Steel	
Cable length	4	metres

Donut Hitch Plate Sensor

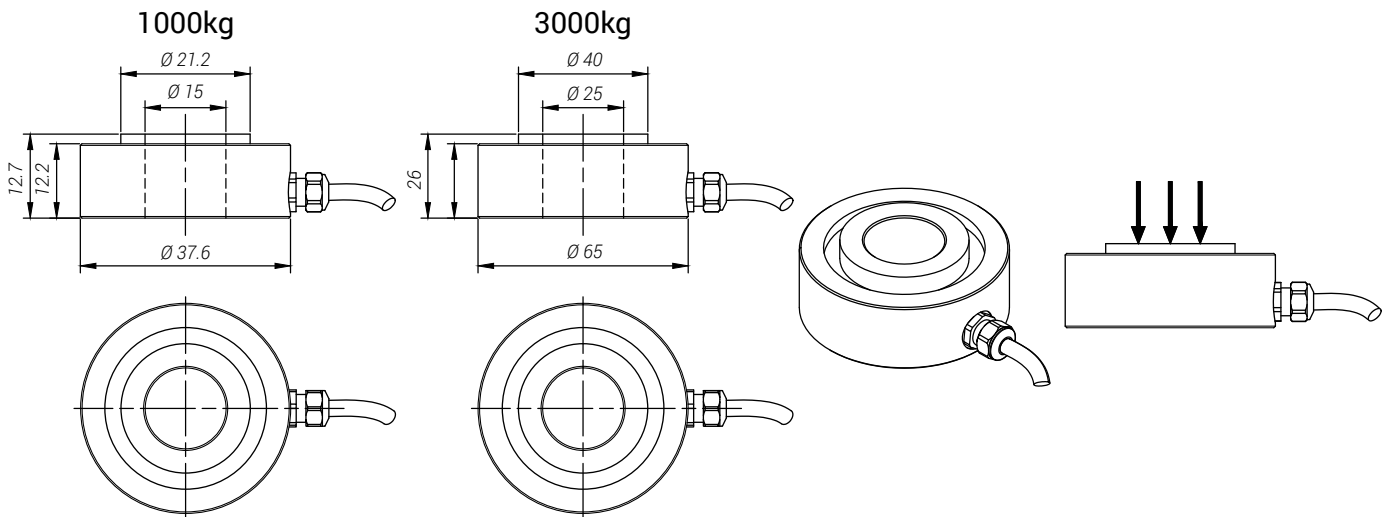
Hole dimensions :
1000kg 15mm
3000kg 25mm

Rope sizes
1000kg 4mm - 14mm
3000kg 4mm - 15mm

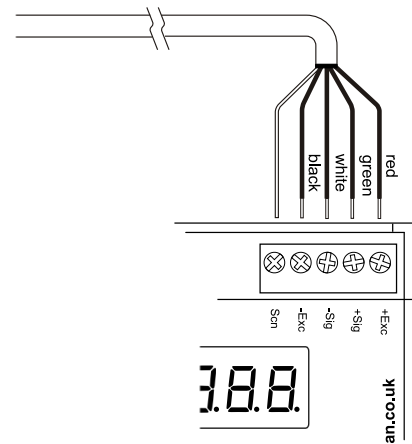
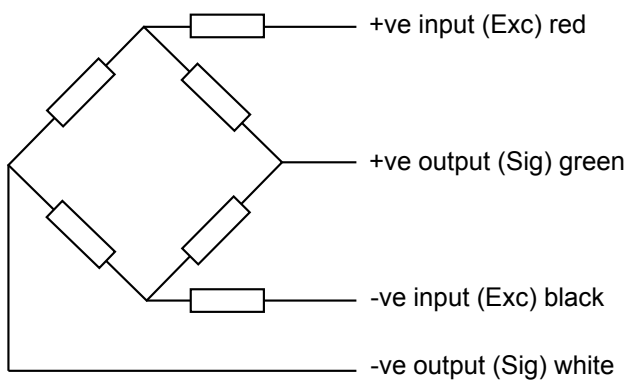
Installation



Dimensions



Wiring Schematic Diagram



Caxton House
Caxton Place
Cardiff
CF23 8HG

(t) +44 (0) 29 2062 5964
(f) +44 (0) 29 2062 5958
(e) info@garan.co.uk
(w) www.garan.co.uk