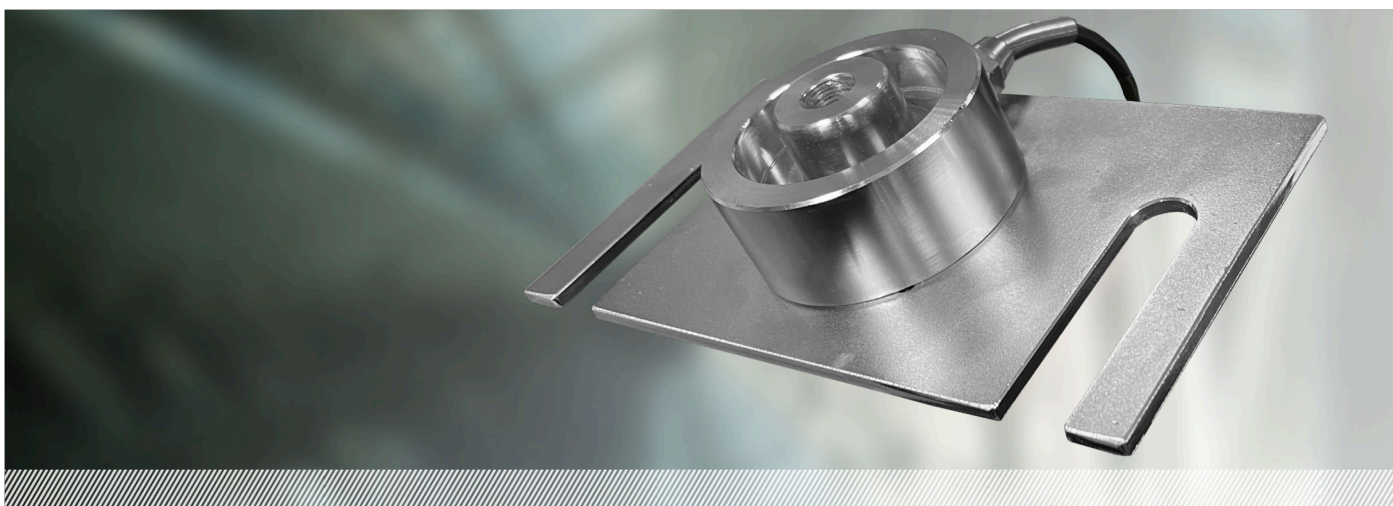


MODEL CCT-G SPECIFICATION

These sensors are designed replace existing Otis cabin sensor systems



Metrology and Electrical Specifications

Rated Capacity	1000	Kg
Rated Output	2 +/- 0.1%	mV/V
Zero Output	0.2	≤ +/- % Full Load
Total Error	0.25	+/- % of applied load
Nominal input voltage	10	V
Maximum input voltage	16	V
Input resistance	400 +/- 20	ohms
Output resistance	350 +/- 5	ohms

Product Description

The Model CCT-G steel sensor is supplied with it own integral mounting plate, when used with our EWS 102 control unit they are specifically designed replace existing Otis cabin sensor systems for installation below the elevator car. they are supplied in matched groups of four sensors per lift car.

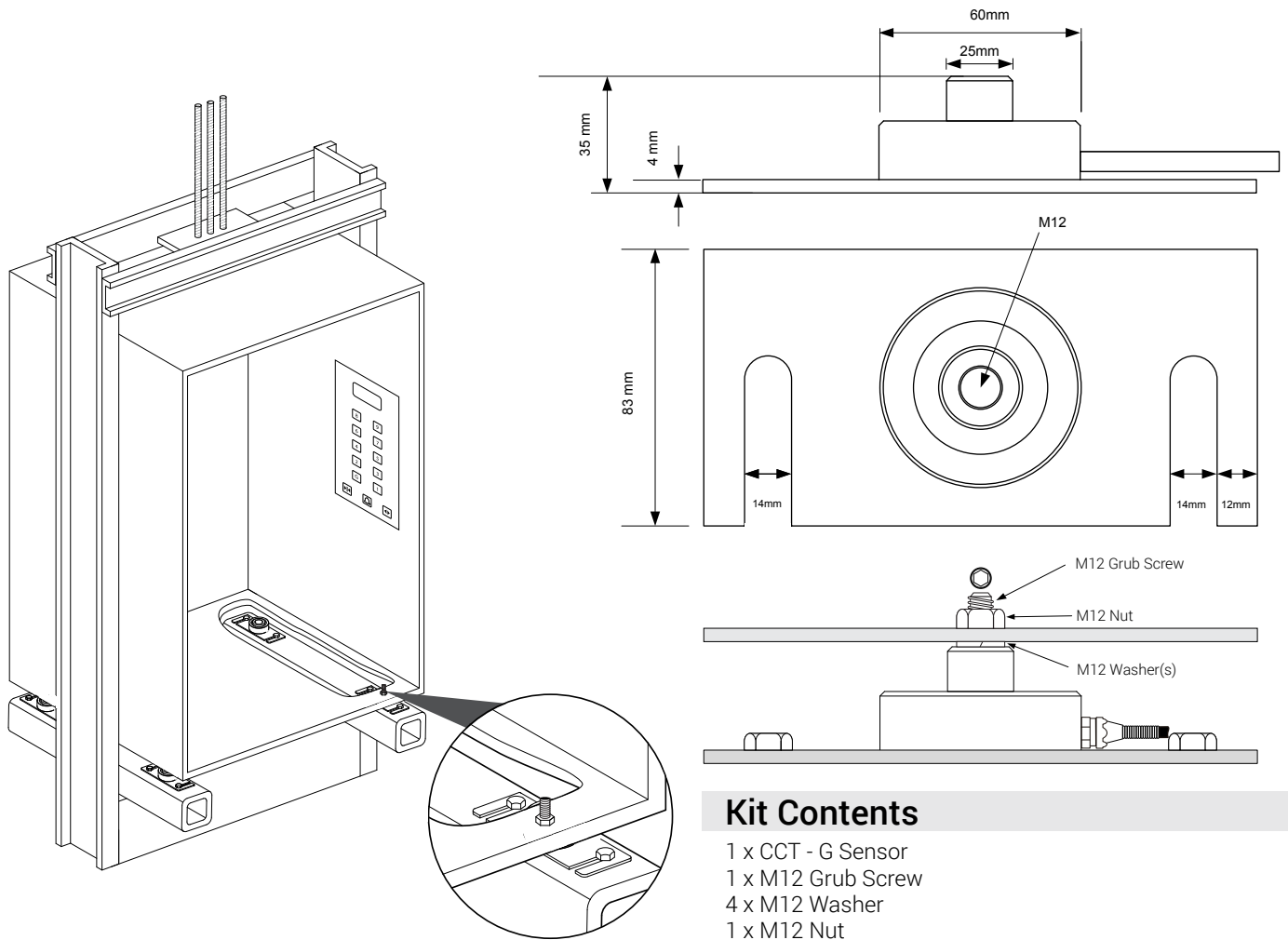
General Specifications

Overload	150	% rated load
Ultimate load	300	% rated load
Temperature range	-30 to +70	C
Protection	IP65	
Material	Steel	
Cable length	6	Metres

Cabin Sensor

Steel construction
Up to 4000kg load (4 Sensors)
High accuracy
Matched outputs
Perfect for like for like replacements in existing systems

Technical Illustrations



Wiring Schematic Diagram

