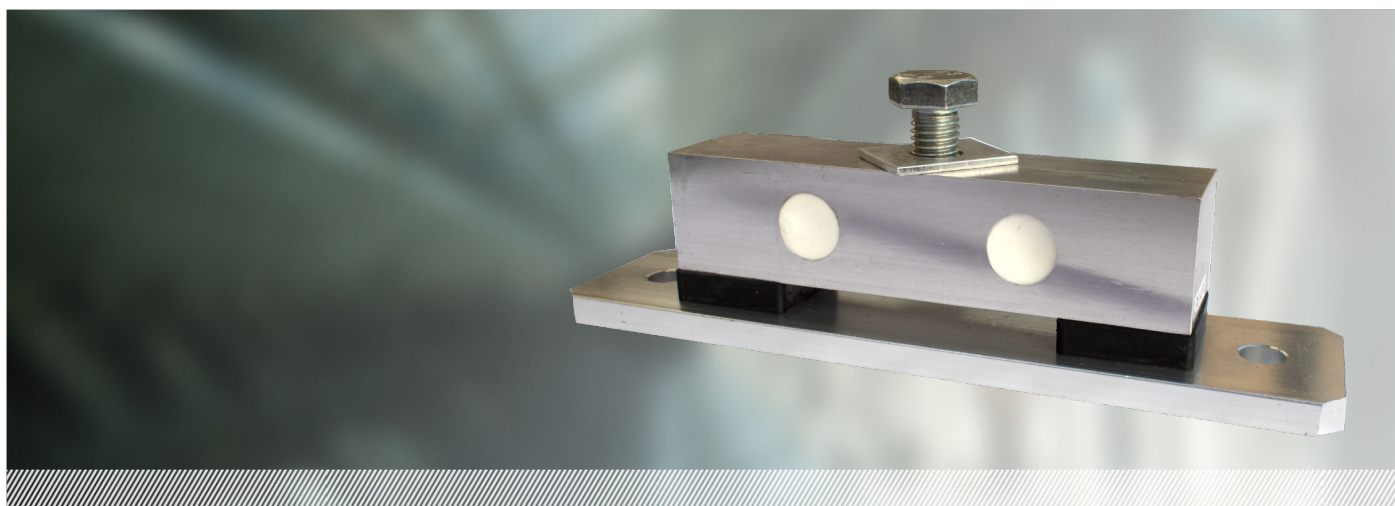


MODEL CCT-C SPECIFICATION

These cabin sensors are designed for large passenger and goods elevators



Metrology and Electrical Specifications

Rated Capacity	2000	Kg
Rated Output	2 +/- 0.1%	mV/V
Zero Balance	0.2	+/- mV/V
Total Error	0.25	+/- % of applied
Nominal input voltage	10	load
Maximum input voltage	15	VV
Input resistance	415 +/- 20	ohms
Output resistance	350 +/- 3	ohms

Product Description

The Model CCT-C shear beam sensor is supplied with its own integral rubber mounting arrangement, specifically designed for installation below the elevator car. It is supplied in matched groups of up to six sensors per lift car, dependant on load. It comprises a full Wheatstone bridge allowing for individual sensors to be swapped out.

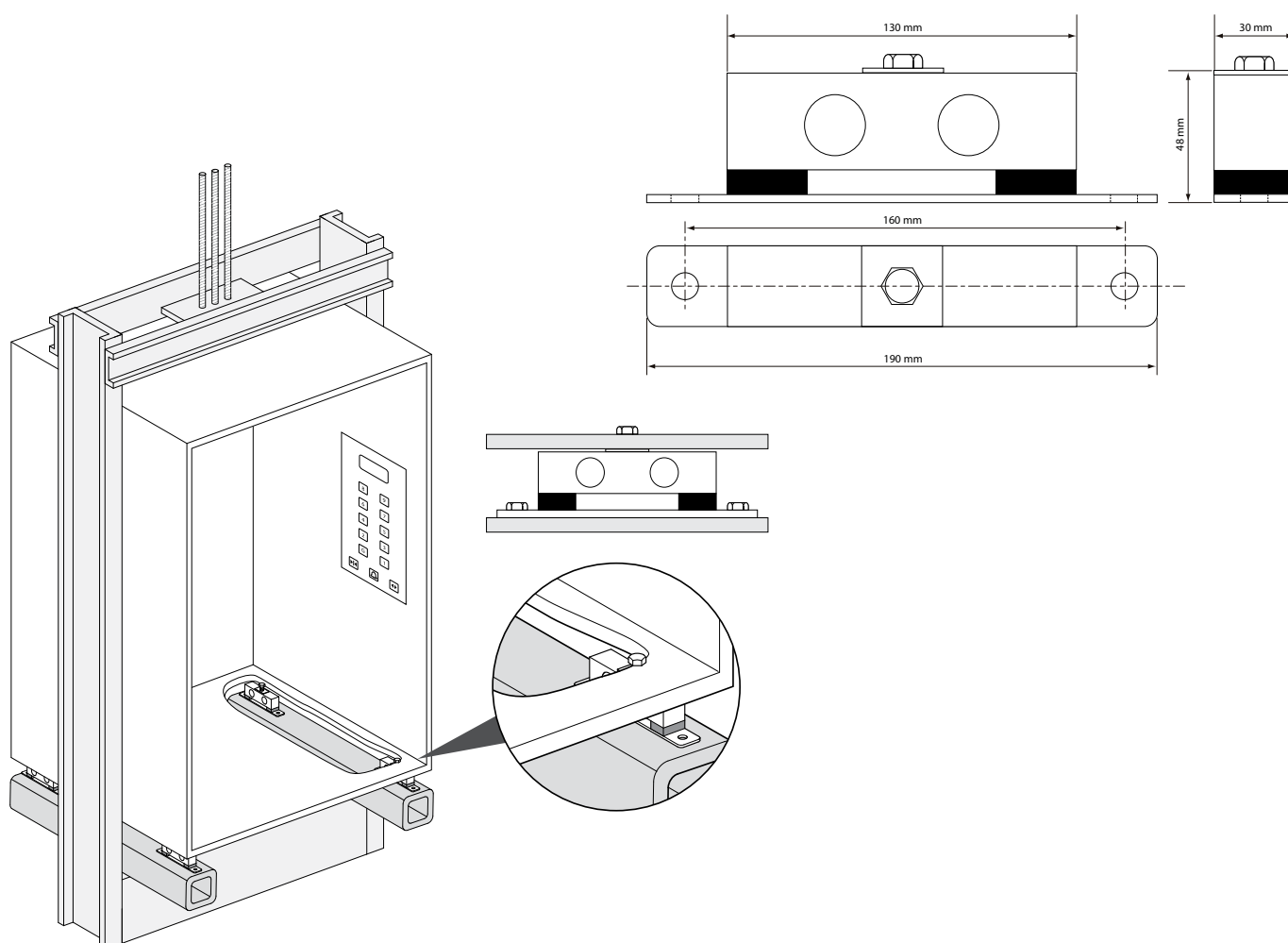
General Specifications

Overload	150	% rated load
Ultimate load	300	% rated load
Temperature range	-30 to +70	C
Protection	IP65	
Material	Anodized Aluminum	
Cable length	6	Metres

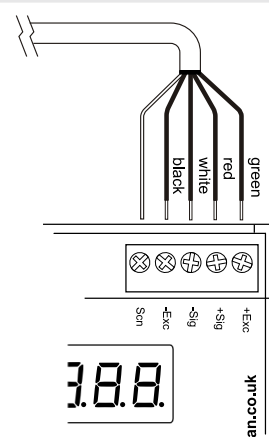
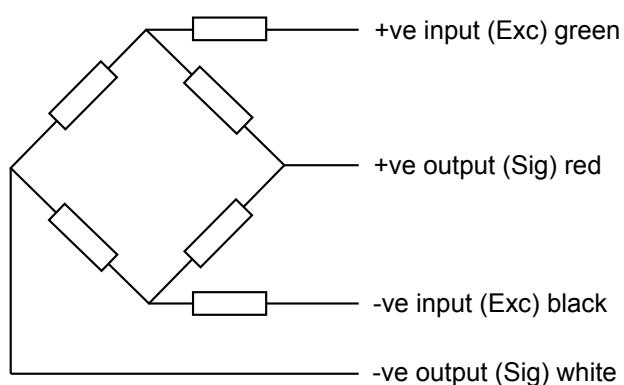
Cabin Sensor

Anodised aluminium construction
Up to 8000kg load (4 Sensors)
High accuracy
Matched outputs
Individual sensor can be replaced
Perfect for new installations

Technical Illustrations



Wiring Schematic Diagram



Caxton House
Caxton Place
Cardiff
CF23 8HG

(t) +44 (0) 29 2062 5964
(f) +44 (0) 29 2062 5958
(e) info@garan.co.uk
(w) www.garan.co.uk